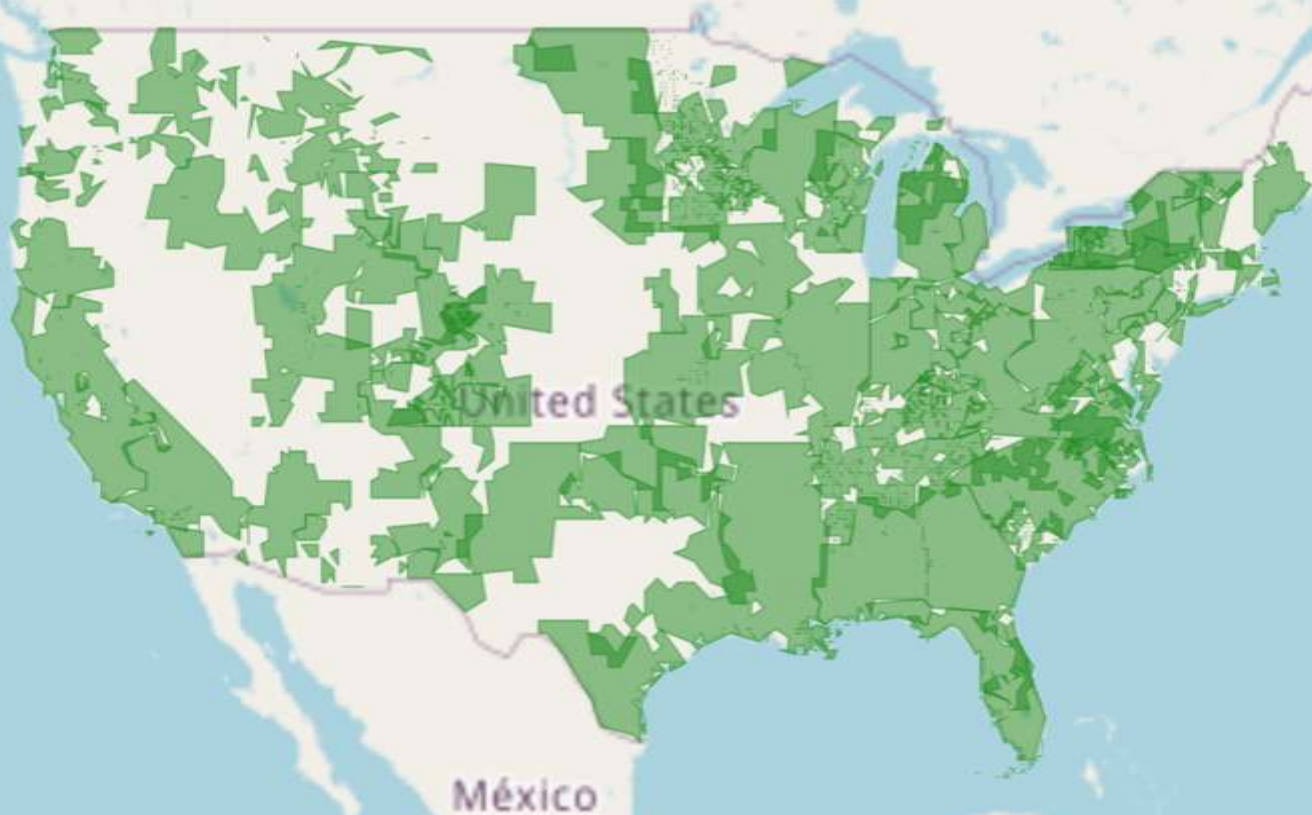


The image features a central logo and tagline. The logo 'RECURVE' is in a bold, black, sans-serif font. Below it, the tagline 'SHAPE THE FUTURE OF ENERGY' is in a smaller, grey, sans-serif font. The background is white with faint, light grey wireframe outlines of electrical transmission towers. A series of colorful, curved lines in shades of blue, purple, red, and orange flow across the bottom and sides of the image, creating a sense of movement and energy.

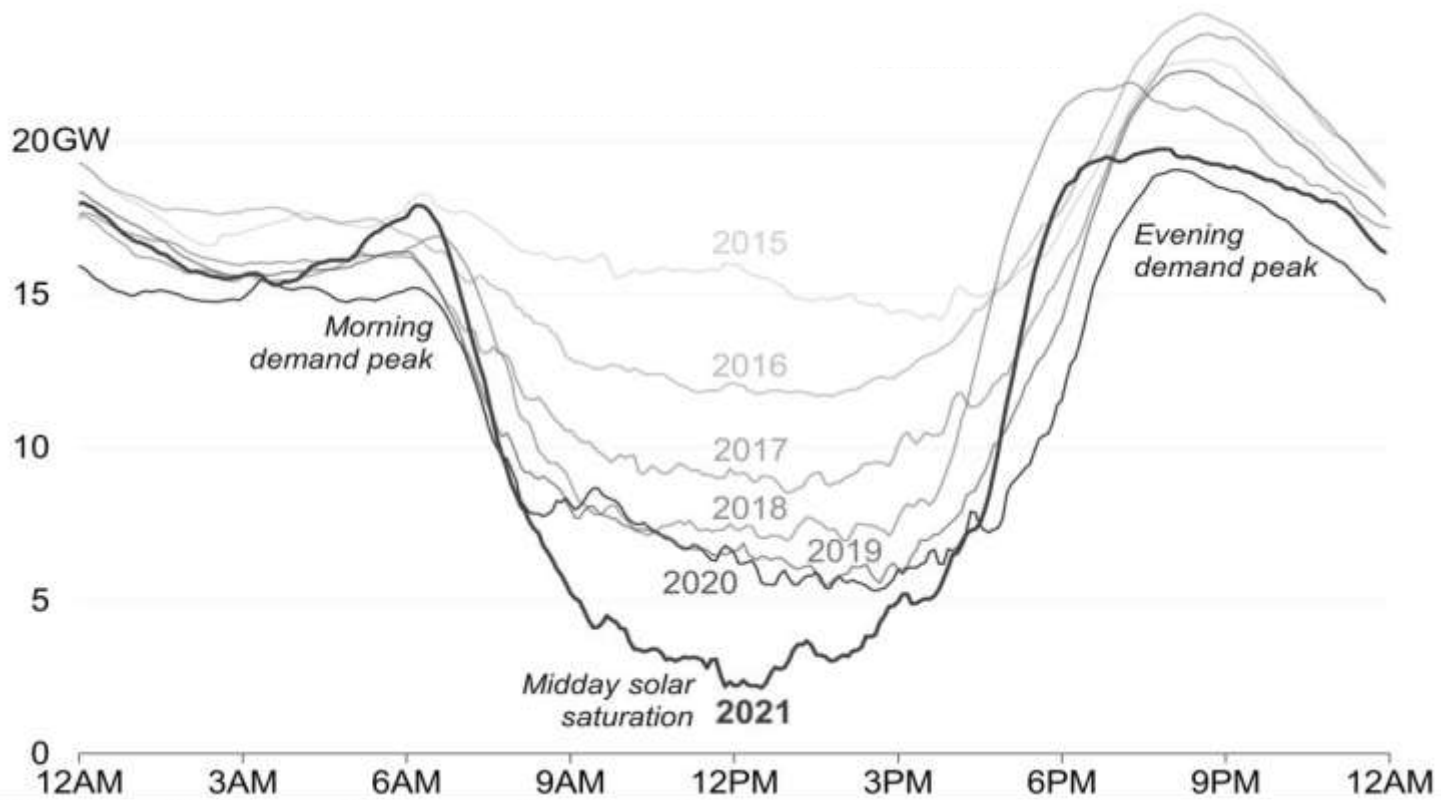
RECURVE

SHAPE THE FUTURE OF ENERGY

71% of customers served by utility with carbon goal

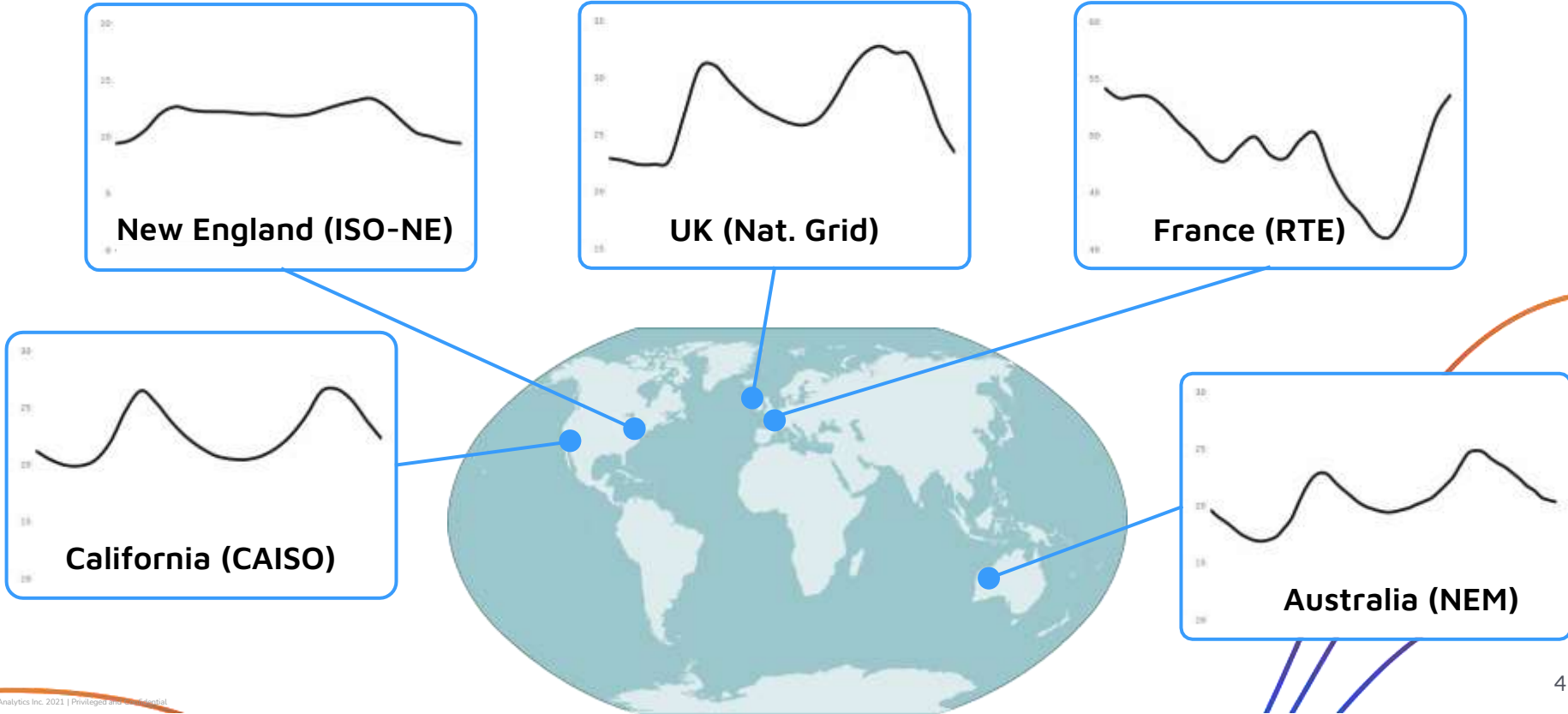


Renewables Are Creating Load Volatility



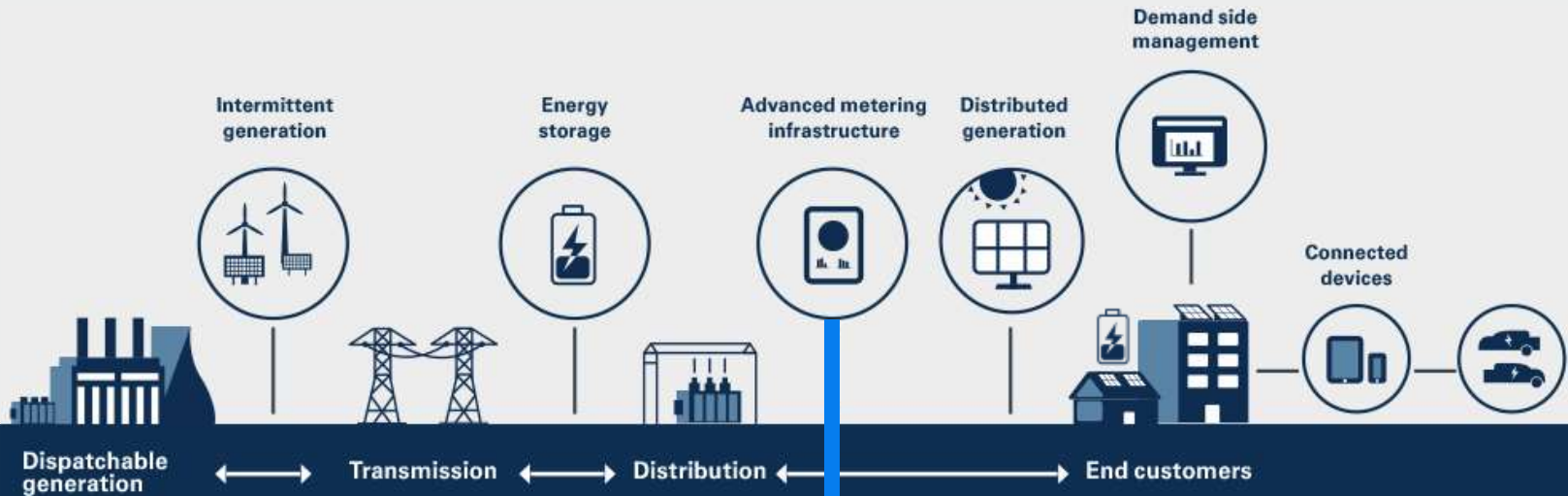
Lowest net load day each year in CAISO, 2015-2021

Grid Challenges are Global and Existential



The Grid is a Balance of Supply and Demand

Supply = Demand



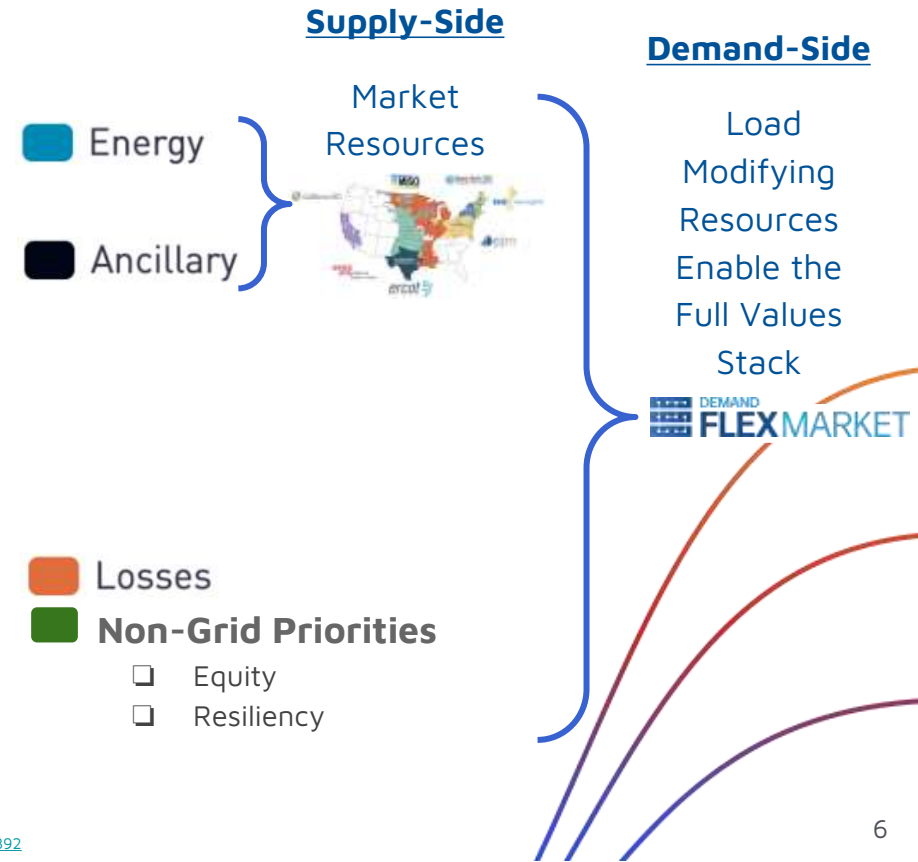
Supply: Energy Resources

Demand: Load Modifying Resources

Utilities Benefits From Demand-Side Resources

Load Modifying Resources (LMR)

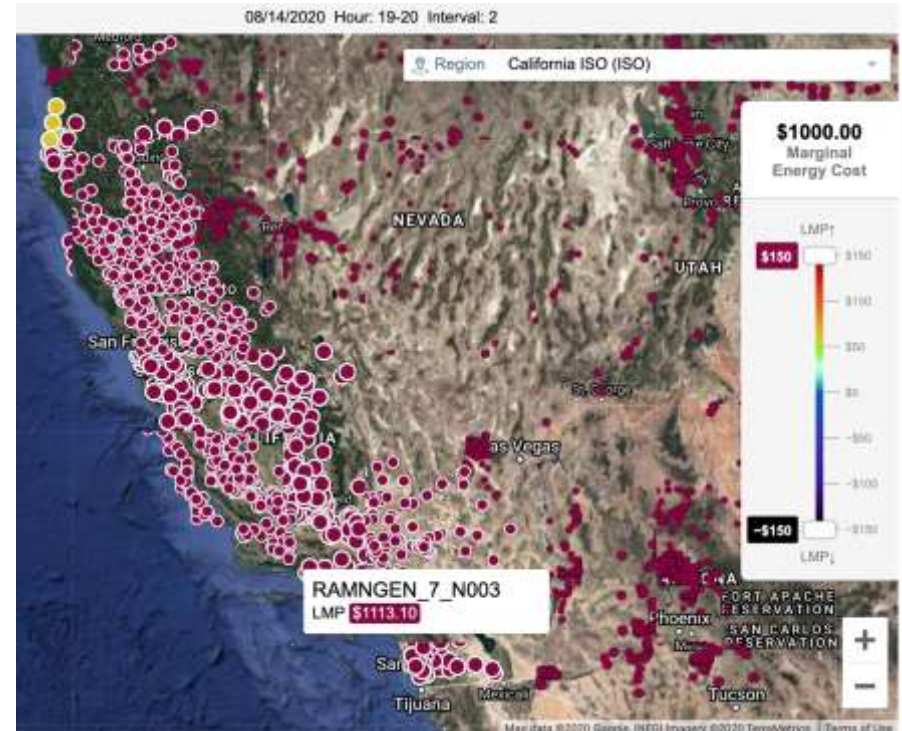
- 15% price advantage over supply-side*
- Hedges market peak energy events
- Modifies forecast to reduce RA
- Provides benefits to local customers
- Incorporate the full value stack



* IEA US Supply-Side Reserve Margins: <https://www.eia.gov/todayinenergy/detail.php?id=39892>

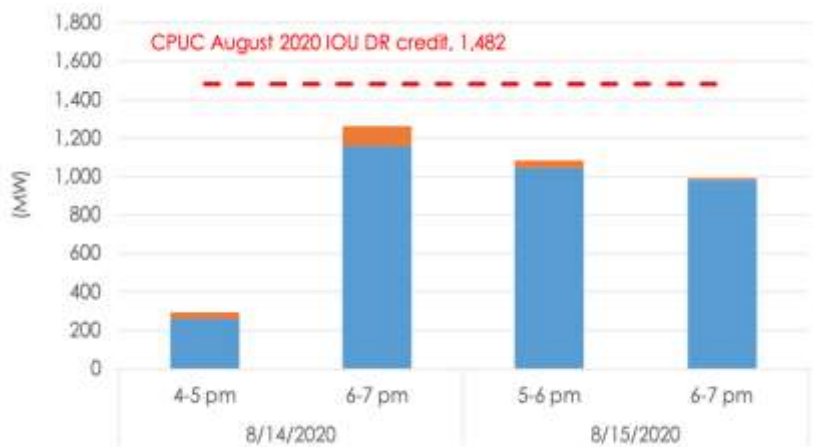
Aug. 14, 2020: Widespread Blackouts

- Temperatures > 100 °F+
- \$1,000+ / MWh
- Rolling Blackouts



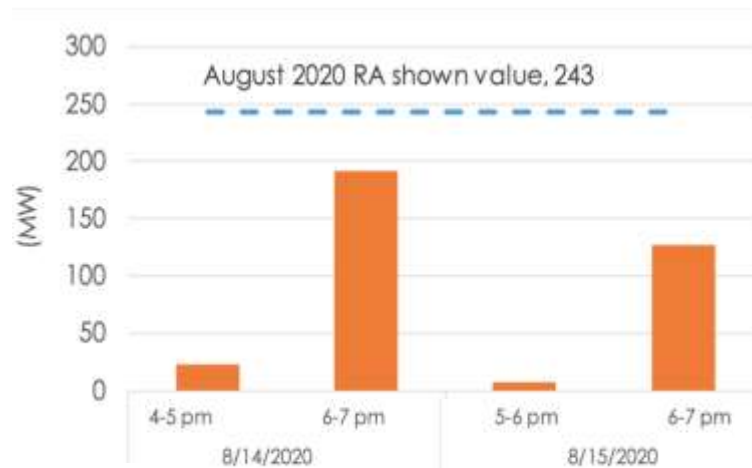
PROBLEM: Did Demand Response Fall Short?

Utility Demand Response



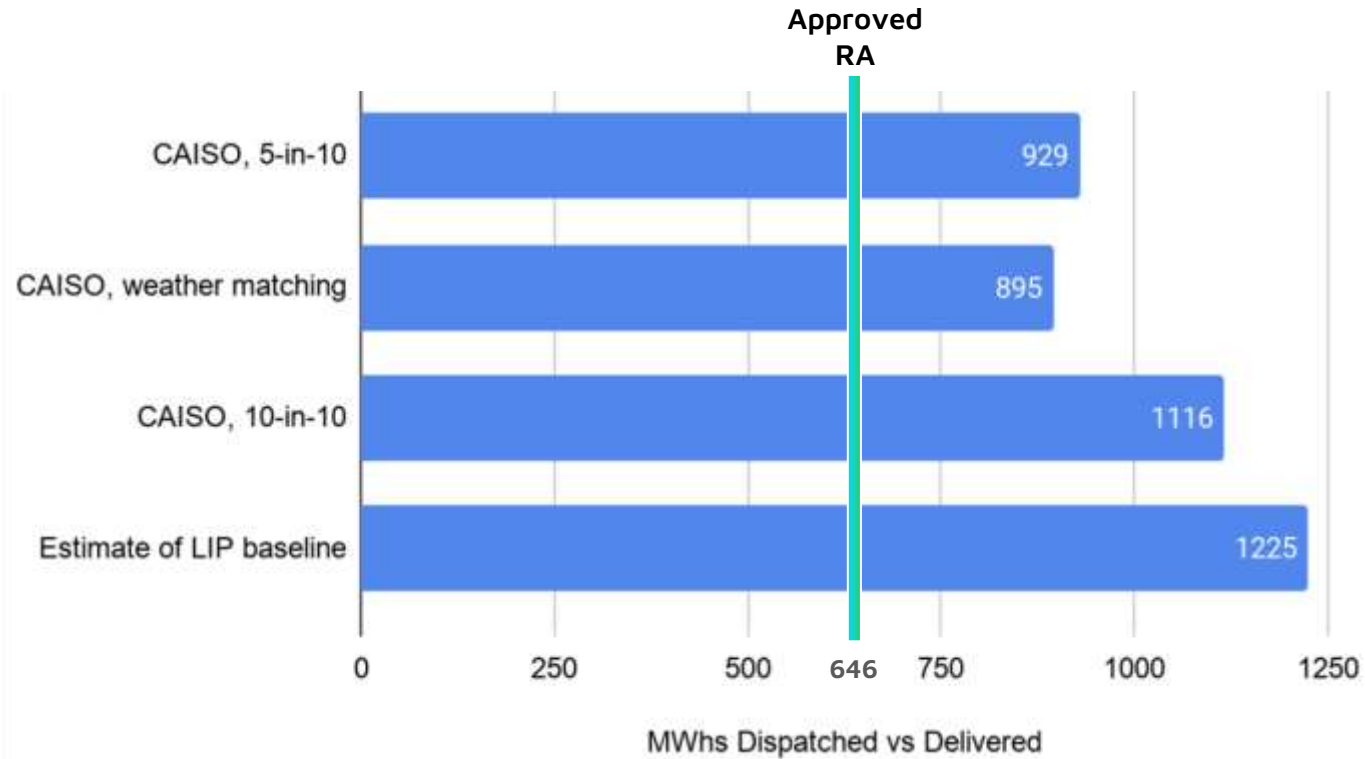
Credited IOU Demand Response: Preliminary Estimated RDRR Response and PDR Dispatch vs. CPUC August 2020 DR Credit

Market Demand Response

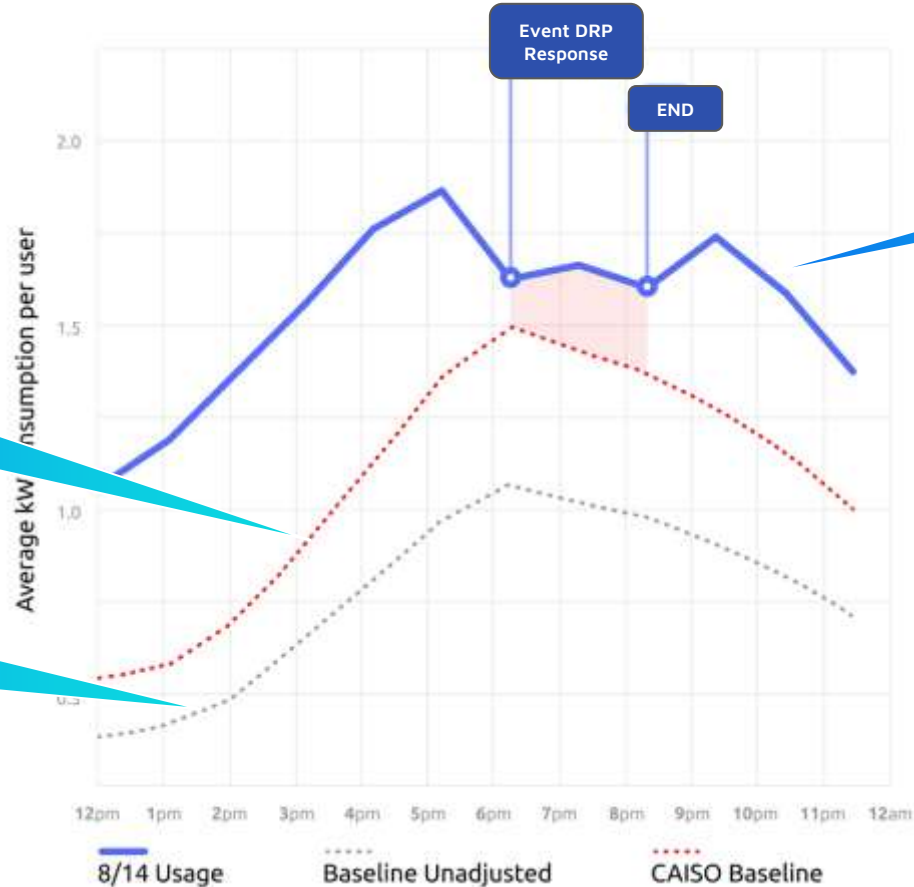


CAISO Dispatch of Non-IOU PDR (Actual Load Drop Not Yet Available)

PROBLEM: Measurement Uncertainty



PROBLEM: Outdated Methods = Flawed Results



Capped "Same Day Adjustment"

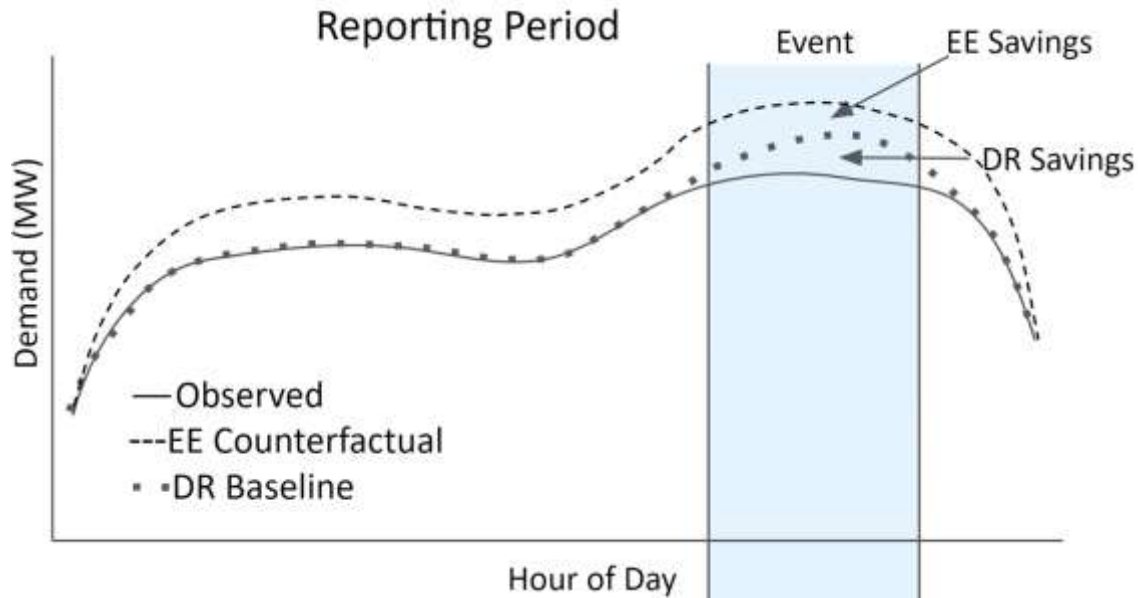
10x10 Baseline last 10 days

Demand Exceeded Baseline All Hours

SOLUTION: Open-Source Meter-Based Telemetry

Unified Field Theory of Demand Flexibility:

- Measure all BTM DERs based on grid impacts at the meter
- FLEXwatt = hourly NMEC site-baseline Δ population stratified comparison group
- Attribute impacts to appropriate contract (EE/DR)
- Revenue-grade open-source and verifiable from raw data



EE / NMEC / Load Shifting
365 day CalTRACK model

Demand Response
60 day CalTRACK model

SOLUTION: Open-Source NMEC



Open-Source Methods and Code



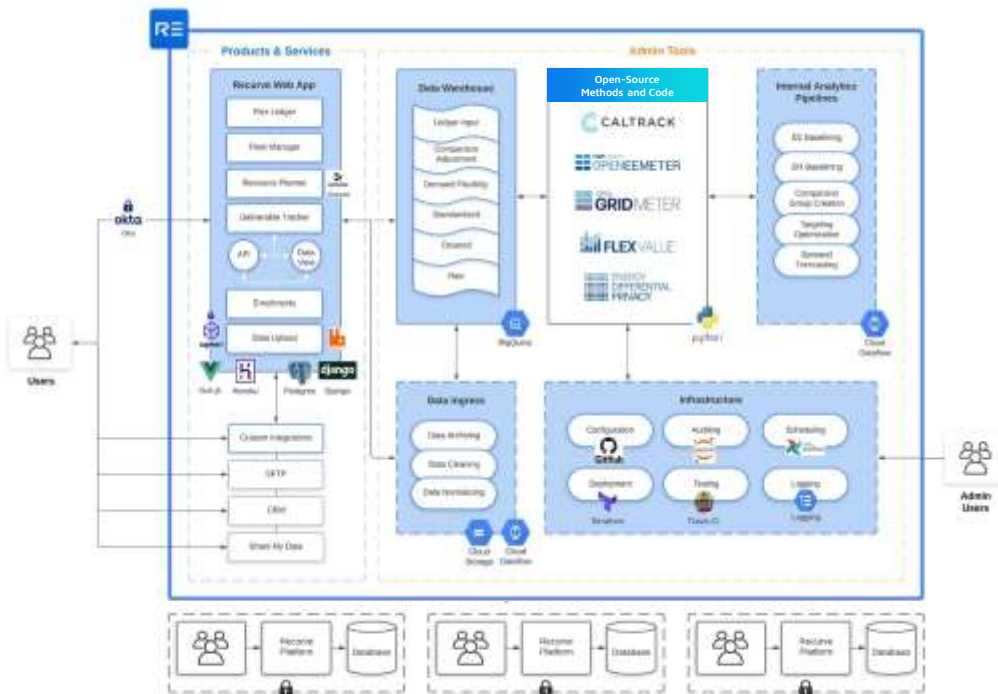
- **CaTRACK**: hourly flex M&V methods
- **OpenEEmeter**: open-source code implementation of CaTRACK methods
- **GRIDmeter**: code and methods for automated stratified comparison groups
- **FLEXvalue**: hourly avoided cost calculations and cost-effectiveness tool
- **Energy Differential Privacy**: mathematically robust privacy protection



SOLUTION: Revenue-Grade Verification



Recurve Platform



- **Revenue-Grade** open-source, auditable, reproducible
- **Verifiable** standard for demand flexibility calculations
- **Scalable** to every meter on the grid
- **Automated** from meter data to settlement-quality transaction
- **Secure** single tenancy, SOC2 certified

SOLUTION: Revenue-Grade Verification




- **Analysis of OhmConnect's response in MCE territory During the 2020 blackout remand response events**
 - Sample of 1,500 residential MCE participating customers
 - CalTRACK baselines for all population meters
 - GRIDmeter open-source advanced non-participant comparison groups
 - Energy Differential Privacy protection


Applying Energy Differential Privacy To Enable Measurement of the OhmConnect Virtual Power Plant


A study of Demand Response during the California August 2020 blackouts.

Prepared By: Marc Paré, Mariano Teehan, Stephen Sufflan, Joe Glass, Adam Scheer, McGee Young, Matt Golden

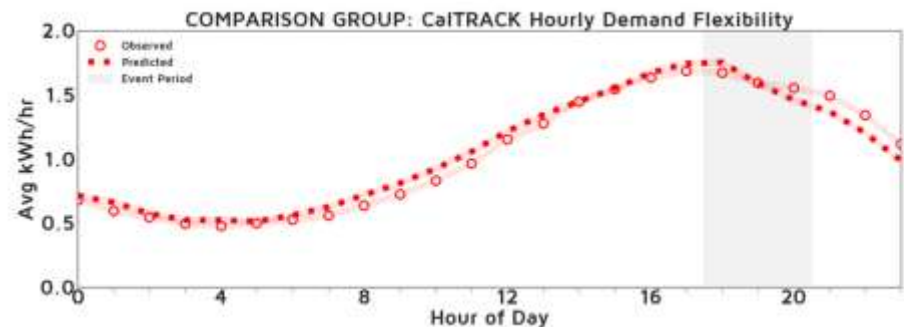
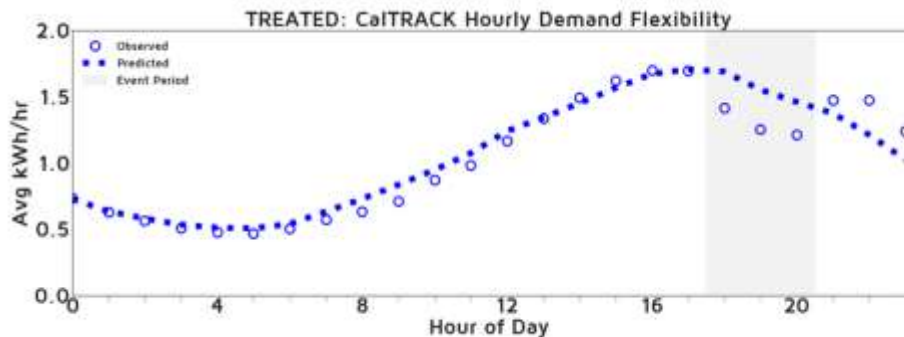
Prepared for:

 U.S. DEPARTMENT OF ENERGY

 NREL
NATIONAL RENEWABLE ENERGY LABORATORY

 RECURVE
SHAPE THE FUTURE OF ENERGY

OhmConnect's VPP During the 2020 Blackouts



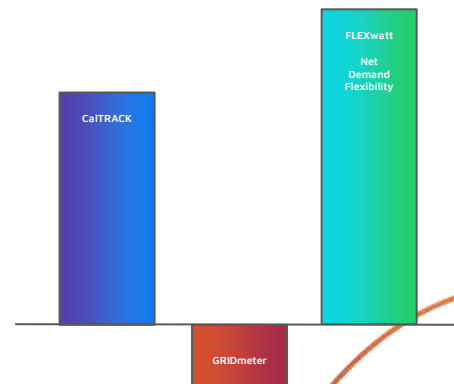
TREATMENT GROUP:

-17.5%
Event Demand Reduction



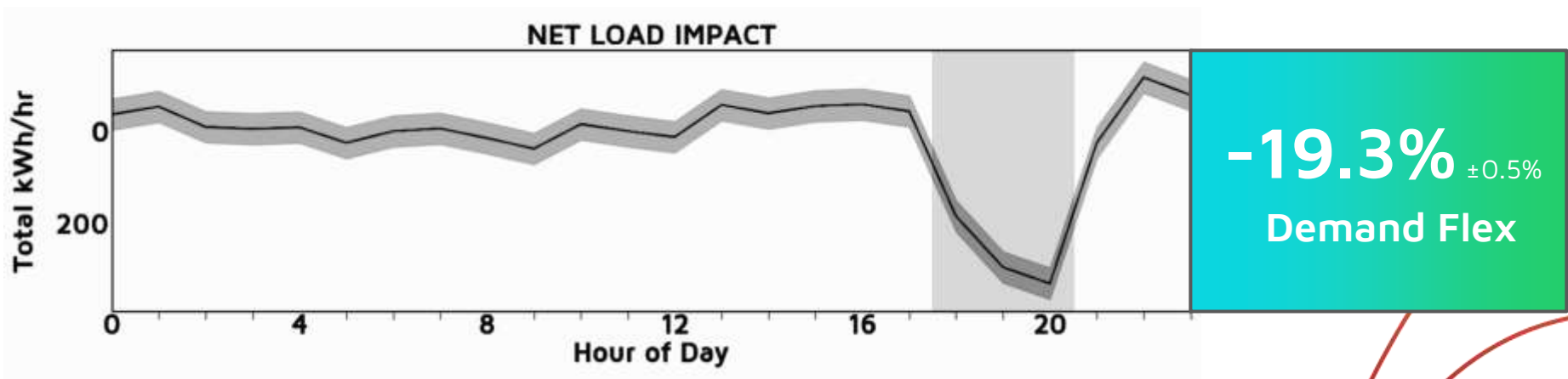
COMPARISON GROUP:

1.8% ±0.5%
Event Demand Reduction



Δ Comparison
(e.g., COVID Impacts)

OhmConnect's VPP During the 2020 Blackouts



CAISO Advanced Methods

CAISO funded Recurve Analysis to enable revenue- grade methods for supply- side demand response.



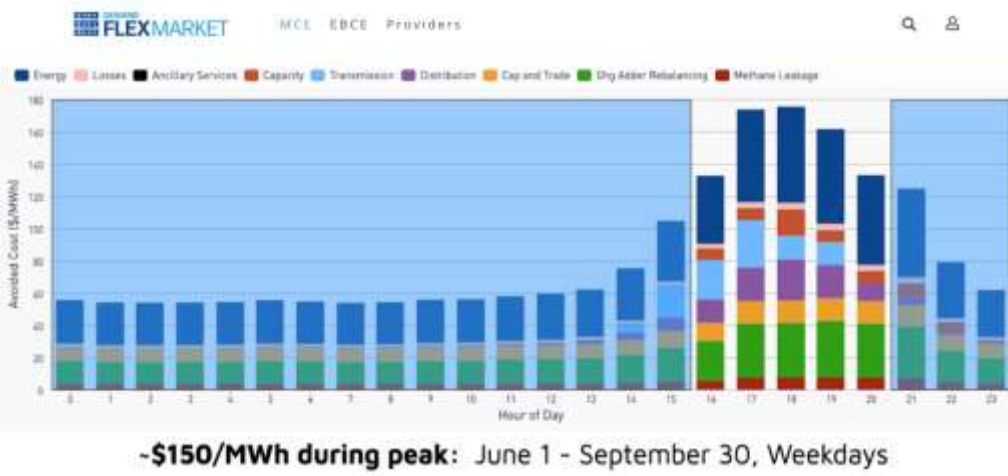
April 9, 2021

The CAISO has contracted with Recurve to evaluate the impacts of demand response during the events of summer 2020 using their open-source comparison group methodology. The data pipelines established for this study will be applicable to further expansion of DR impact analysis in 2021. Recurve will also provide a point-by-point review of the control group method currently approved by FERC for the CAISO DR Tariff.

The purpose of this analysis is to:

- Understand and operationalize the baseline and comparison group methods in relation to existing guidance and practice;
- Understand barriers to data access and identify a viable path to overcome them;
- Understand the 2020 heat storm events based on the baseline and comparison group methods implemented by Recurve to inform and support decision making; and
- Understand impacts of demand response events in 2021 and operationalize methods at scale.

As a result of this effort, the CAISO hopes a DR provider or resource(s) can use this methodology as a performance methodology for settlement of market dispatches in summer 2021, conditional to the methodology's compliance with the CAISO tariff. Following this, the CAISO hopes the methodology will be applied broadly amongst the DR community to measure performance.



Peak FLEXmarket Utility Procurement

Additional Flex as a Energy Market Hedge, and Load Modifying Resource (LMR)

- Seasonal Summer Peak Savings at \$150 a MWh
- Day ahead signal based on CAISO price

MCE Commercial Efficiency Market

Enabling Innovative Business Models and Customer Choice

Rather than develop a typical prescriptive saving program, MCE's Commercial Efficiency Market (CEM) is an Energy Efficiency program implemented by aggregators.

MCE will track metered savings from projects to determine payments to aggregators based on the hourly avoided cost value of their projects net of program and customer costs; in turn, aggregators will be motivated to maximize grid and customer outcomes, and can use this new cash flow to develop

Ratepayer Program

Grid-Responsive Peak FLEXmarket

Delivering Peak Reductions To Improve Grid Reliability, Decrease GHGs, and Help Customers Save on Energy Costs

MCE is pleased to announce the launch of the Grid-Responsive Peak FLEXmarket, a first-of-its-kind program designed to shift energy use away from times of extreme demand.

The Demand Flex Response (DFR) program is a key tool to meet the need for reductions in energy use that will allow MCE to

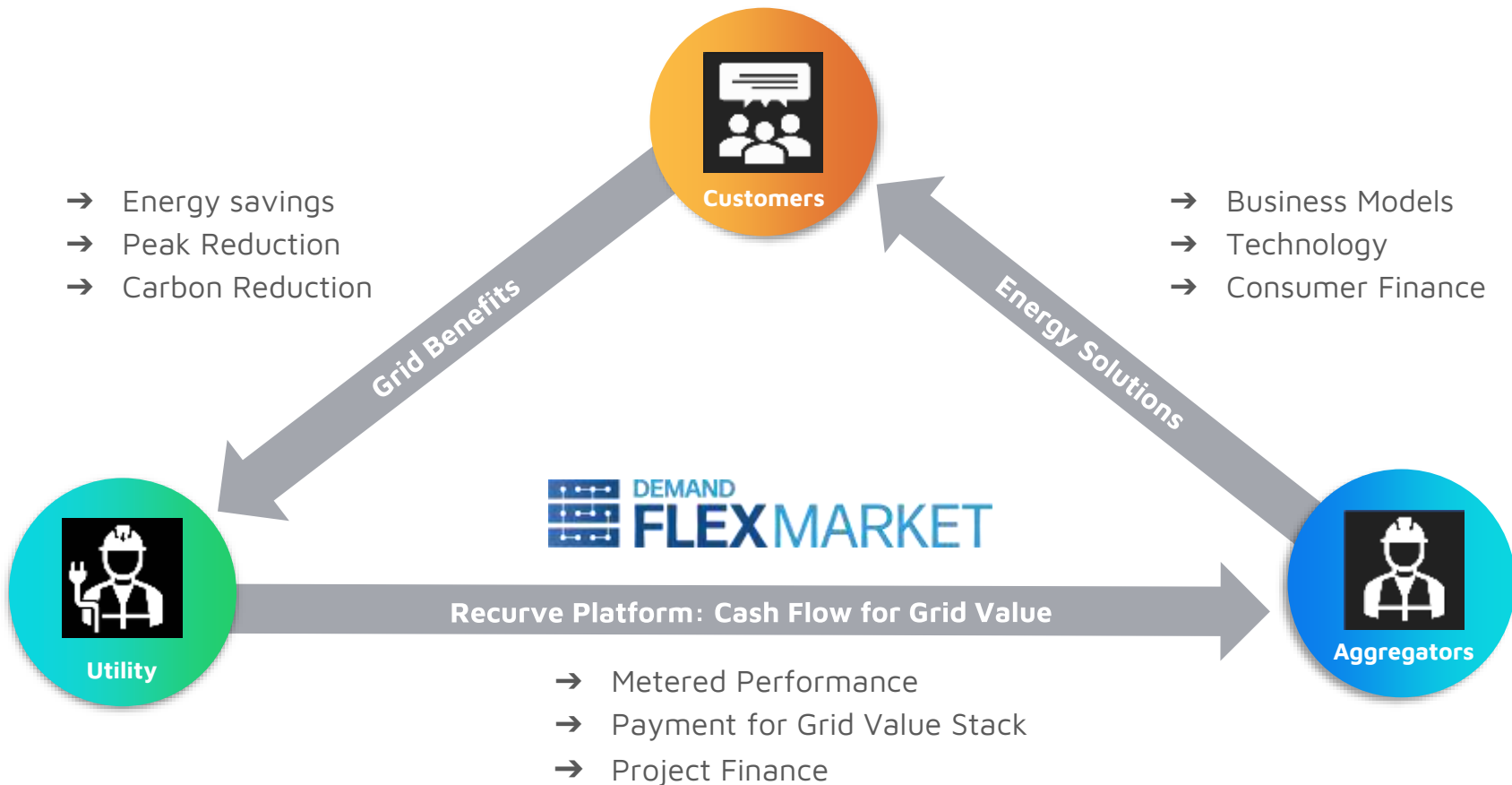
Procurement

Commercial Efficiency Market CPUC Program

Market for Cost Effective Long-Term Savings (Population NMEC + P4P)

- Paid for at the rate that makes every project cost effective (TRC=1)

Making Markets for Demand Flexibility



FLEXMARKET Aggregators



BlocPower

Increase your business's profitability with a modern heating and cooling system.

BRIGHT POWER

Bright Power

Bright Power is the premier provider of energy and water management services.



Carbon Lighthouse

Cut Energy at a Portfolio Scale. Because one building at a time doesn't cut it.



Elevation Home Energy Solutions

We are on a mission to Elevate the Home Energy Experience.



EverWatt

Stop wasting money on old lighting.



Halco

Halco is a leading residential and commercial energy services provider in NY.



CH Energy

CH Energy is an expert in providing a turnkey energy solution.

CLEARResult

CLEARResult

We make energy efficiency smarter, faster, and more accessible for everyone.



Conectric IoT

Operational Asset Risk Management.



Joule Smart

Joule Smart will save you time, money, and give you peace-of-mind.



Leap

Leap is a marketplace for grid services, to help balance the grid.



National Resource Management

If your business relies on refrigeration systems, NRM has a way to help you.

DIVIDEND

Dividend Finance

A smarter, faster way to finance home improvements and commercial upgrades.

ecobee

ecobee

A smart-home technology helping customers maintain comfort and cost savings.



EcoGreen Solutions

We help companies save energy and cut costs.



Northern Pacific Power Systems

Premier Energy Solutions for the North Bay Area in California.

OhmConnect

OhmConnect

Use energy when it's cleanest and earn rewards for saving when it's dirty.

PACKETIZED ENERGY

Packetized Energy

Packetized Energy makes electricity flexible.



Ecology Action

Ecology Action is creating a thriving environment and low-carbon economy.



Edgewise Energy

Helping property owners to improve resilience, sustainability, and profit.



Electrum

Electrum provides a home electrification concierge marketplace.

Sealed

Sealed

Stress-free home upgrades? With Sealed, they're not just a fantasy.



Swell Energy

Swell Energy is an energy and smart grid solutions provider.

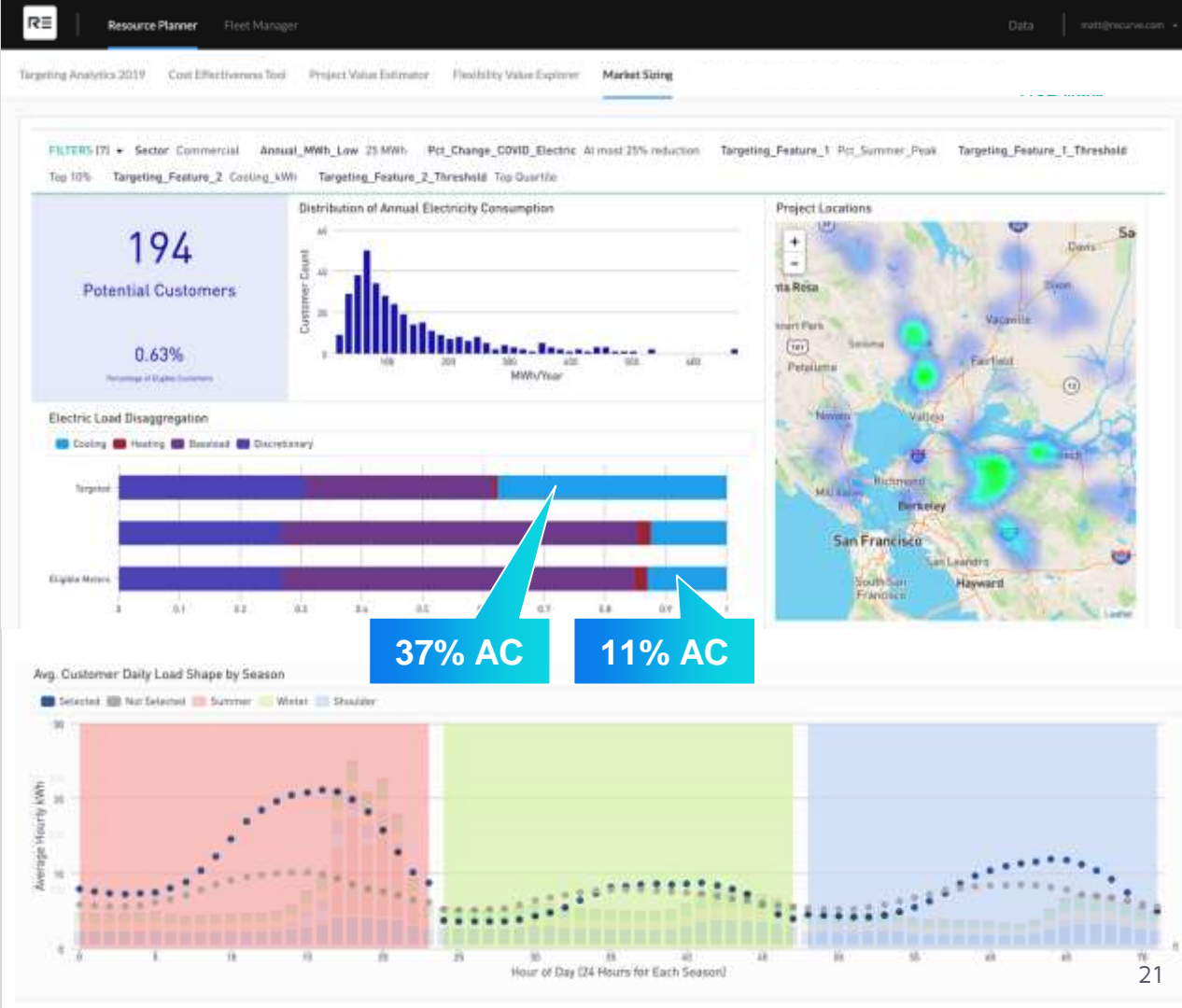
voltus

Voltus

Better Energy. More Cash.

Resource Planning

Forecasting Virtual Power Plant potential by highest value customers



Fleet Management

SMB Controls / HVAC NorCal

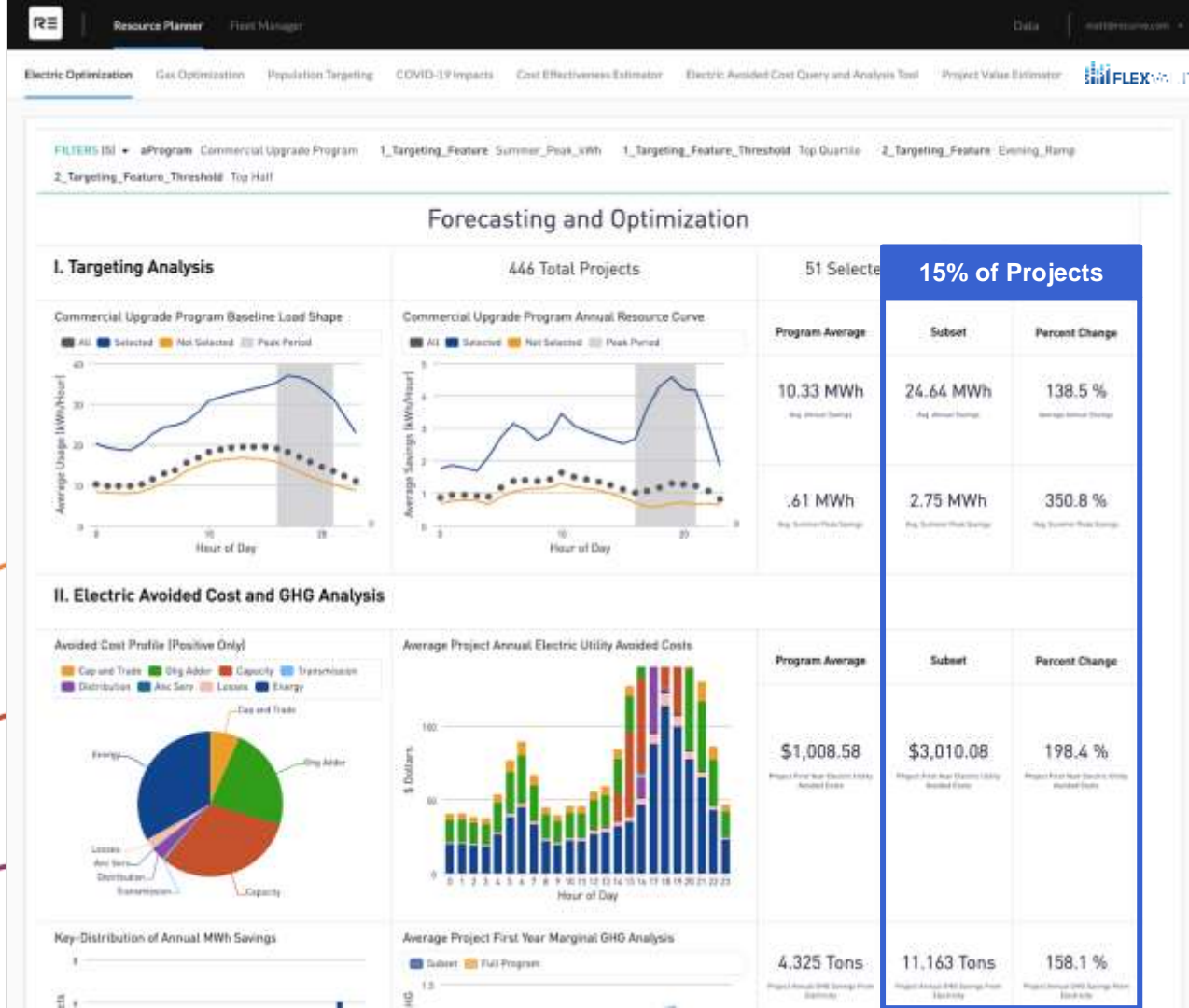
Selected Projects

2.5x Energy Savings

4.5x Peak Reductions

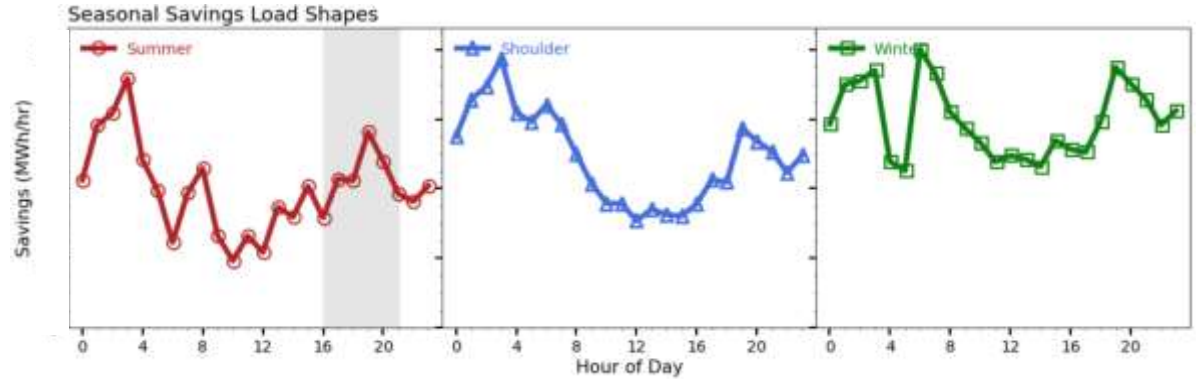
3x Grid Value

2.5x GHG Savings

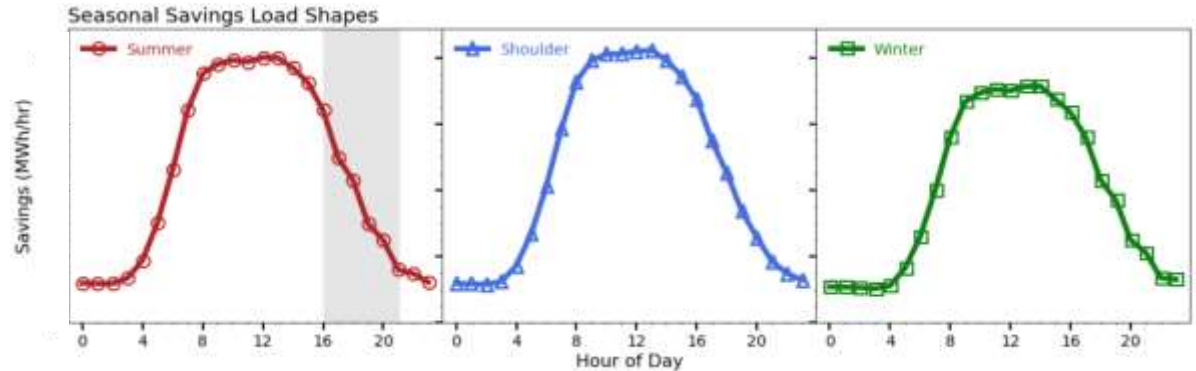


What Does Stuff Do In The Real World?

Measured Savings:



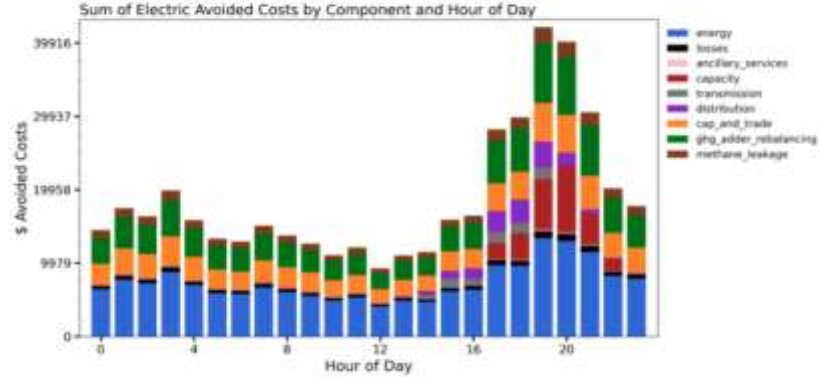
Deemed Savings:



Averages Trap Us In Mediocrity

Measured Value:

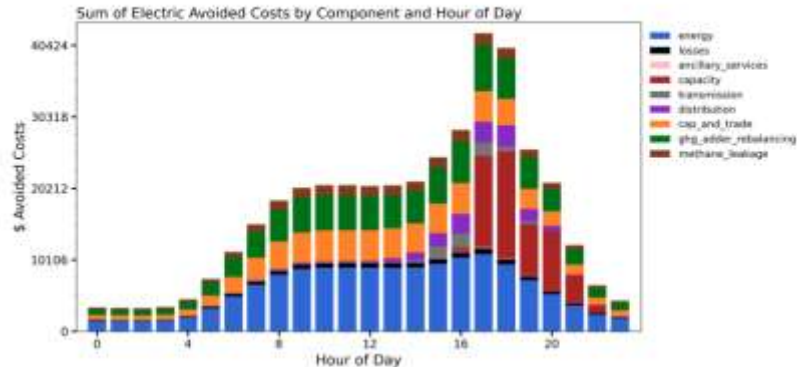
From CalTRACK Hourly Measurements:



\$447k Grid Value

Deemed Value:

Using DEER Load Shape:

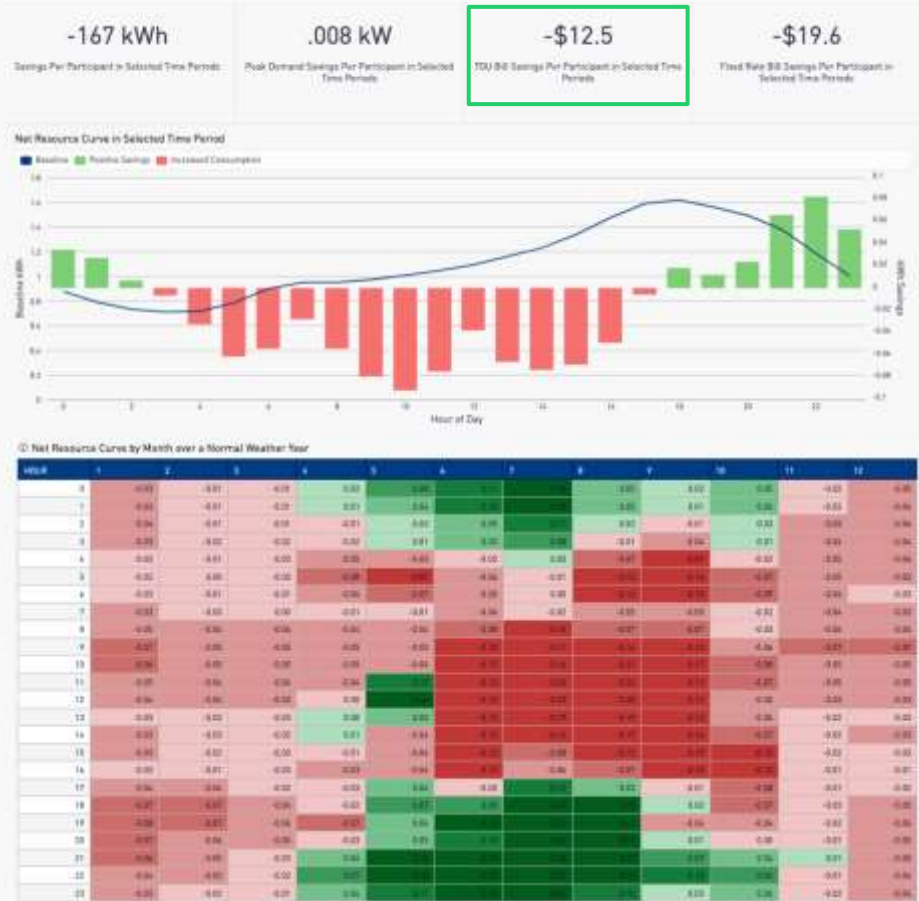


Δ \$48,000

\$399k Grid Value

RESOURCE CURVE: Smart Thermostat

Positive grid value observed due to shift from peak to midday, despite an increase in total usage

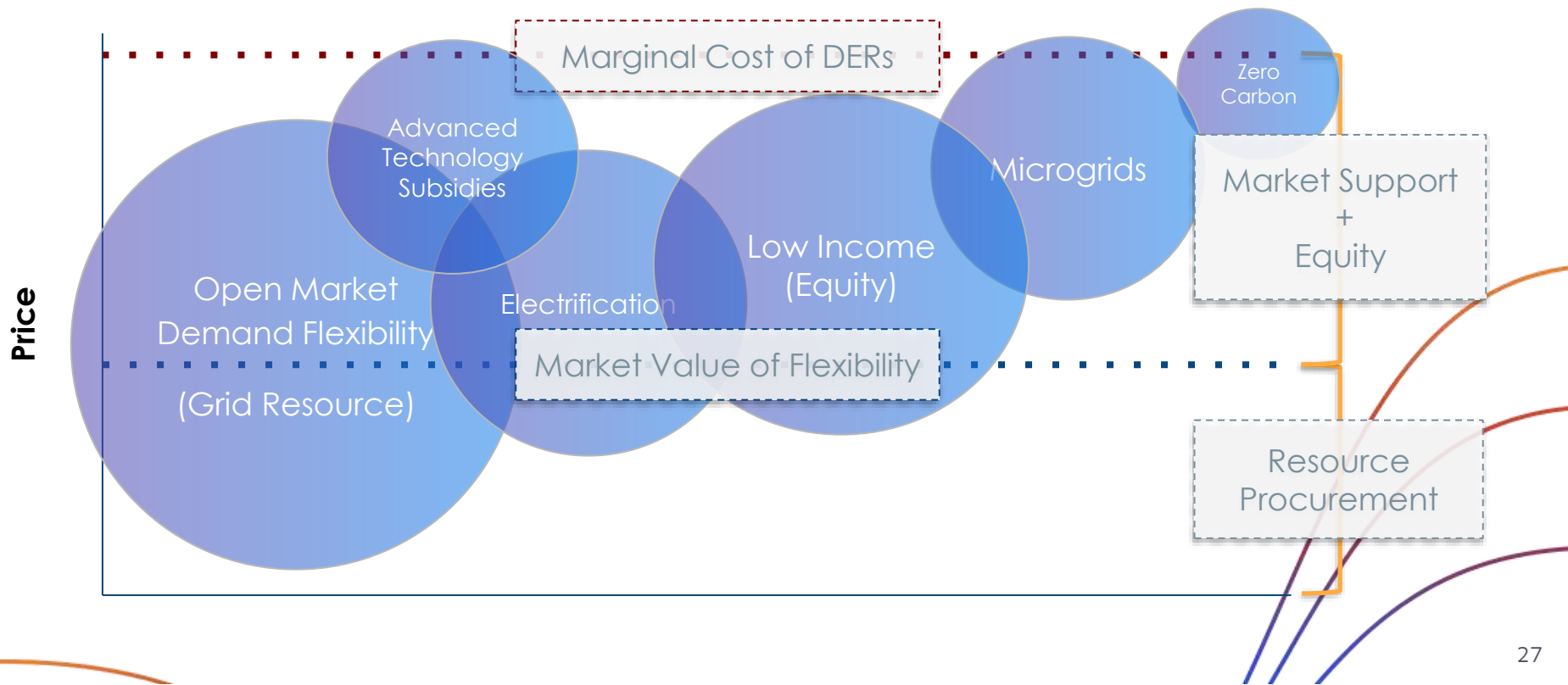


RESOURCE CURVE: Heat Pump

Negative grid value observed due to increase in night and morning loads



Program Design → Market Design



The Foundation for Flexibility as a Resource



Data Access & Privacy

- ✓ Secure
- ✓ Functional
- ✓ Risk-Based



Meter-Based Quantification

- ✓ Transparent
- ✓ Open-Source
- ✓ Accessible



Performance Payment

- ✓ Accountable
- ✓ Flexible
- ✓ Financeable



Competitive Procurement

- ✓ Standard
- ✓ Integrated
- ✓ Open Market



Optimizing
Energy Efficiency
to Serve Small
Businesses in
Disadvantaged
Communities



Recurve's Ameren Platform

90-Second Video



Helping Small Businesses
During the Time of COVID

RECURVE
SHAPE THE FUTURE OF ENERGY



RECURVE

SHAPE THE FUTURE OF ENERGY

Matt Golden, CEO
matt@recurve.com